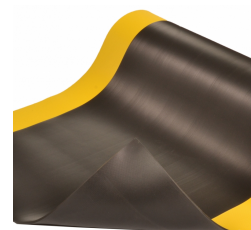
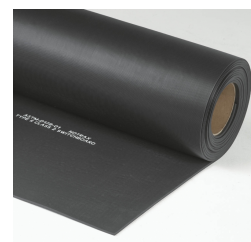
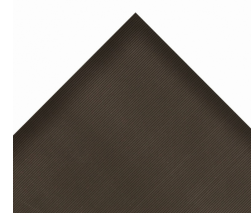


Insulated Corrugated Switchboard Matting 830

Product Images





Short Description

- Electrically Insulative Type 2 PVC compound
- Insulated matting engineered to protect workers from electric shock
- Corrugated top surface - Added traction and easy to sweep clean
- Each square foot of this matting is tested in conformance with ANSI/ASTM D-178 specifications
- Class 2 Di-electric Strength: 30,000 volts
- Proof test of 20,000 volts
- Recommended maximum use voltage: 17,000


Description

Corrugated Switchboard Matting is a non-conductive floor matting made from a PVC compound, designed to provide insulation for the worker. The mat prevents the worker from being grounded, thereby eliminating the possibility of electrical shock. The corrugated saw-tooth top surface provides increased traction and is easy to sweep clean. Switchboard matting is intended for use in dry environments in front of high voltage boxes, electrical fuse boxes, and transformers.

Specifications

Model No	830
Available Colors	Black; Black/Yellow
Overall Thickness	1/4
Roll Sizes	2'x 75'; 3'x 75'; 4'x 75'
Custom Lengths	2', 3' and 4' widths (up to 75' long)
Group	Ergonomic, Anti-fatigue & Safety Matting
Environment	Dry Areas
Special Characteristics	Free of DOP, free of DMF, free of ozone depleting substances, free of silicone and free of heavy metals Recommended maximum usage: 17.000 Volts
Recommended Use	Around electric sub-stations, transformers and switches, electrical panels, engine and generator rooms
Special Remarks	It is highly recommended that the mat be replaced every 12 months for optimum performance
Surface	Lengthwise Corrugated Rib Pattern
Edges	No borders
Usage Intensity	Heavy duty
Material Specifications	PVC (DOP free)
Process	Calendering
Weight Lbs/sqft	1.7
Voltage Class	2
Voltage Maximum	20000
Voltage Recommended	17000
REACH Compliant	Reach compliant (Registration, Evaluation, Authorization and Restriction of Chemicals).
Anti-Fatigue Rating	Good
Slip Resistance Rating	Best
Wear Resistance Rating	Best

Prop 65

 **WARNING:** This product can expose you to chemicals including di-2-ethylhexyl phthalate and/or diisononyl phthalate which is known to the State of California to cause cancer, birth defects or reproductive harm. For more information, visit www.P65Warnings.ca.gov.

Product Options

Color:	Black
	Black/Yellow
Dimensions:	2ft x 75ft
	2ft x Specify Length
	3ft x 75ft
	3ft x Specify Length
	4ft x 75ft
	4ft x Specify Length