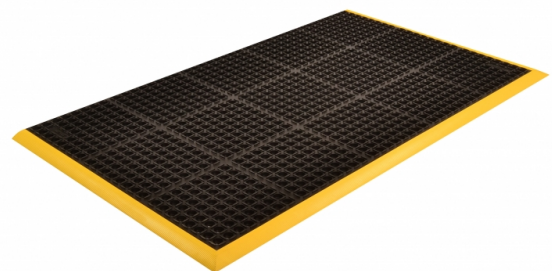
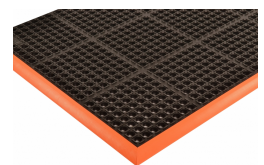
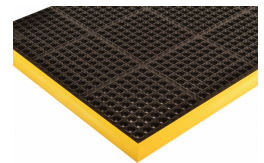
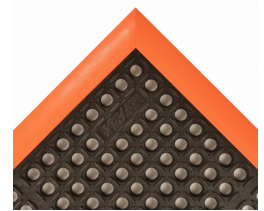
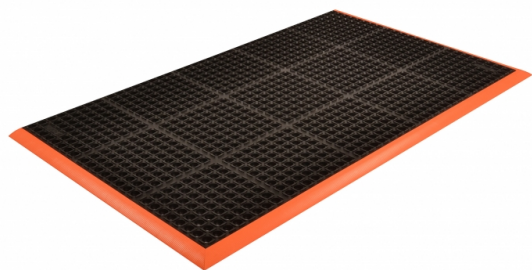


Drainage Anti-Fatigue Mat Safety Stance[®] 549

Product Images







Short Description

- Resilient natural rubber compound withstands many common industrial cutting oils and chemicals
- Large hole configuration facilitates drainage and resists clogging
- Raised mini-diamond studs on top surface minimize slippage
- Colored beveled borders are permanently affixed to the mat to prevent swelling/ curling
- Borders are made from 100% nitrile rubber
- Beveled edges available on 3 or 4 sides
- 3-sided borders 26x40", 38x40", 38x64", 38x124" 4-sided borders 28x40", 40x40", 40x64", 40x124"

Description

Safety Stance® is made from a grease resistant rubber compound to withstand many of the more commonly found industrial cutting oils and chemicals. Particularly well suited for wet or dry work areas, Safety Stance® features a large hole drainage system with a mini-diamond studded top surface to minimize slippage. Permanently affixed beveled edges are made from a 100% Nitrile rubber compound offering the same resistance to oils/chemicals as the mat.

Specifications

| | |
|-------------------------|--|
| Model No | 549 |
| Available Colors | Black/Orange; Black/Yellow |
| Overall Thickness | 7/8 |
| Standard sizes | 26"x 40"; 28"x 40"; 38"x 40"; 38"x 64"; 38"x 124"; 40"x 64"; 40"x 124" |
| Group | Ergonomic, Anti-fatigue & Safety Matting |
| Environment | Wet/Dry and Oily Areas |
| Special Characteristics | Free of DOP, free of DMF, free of ozone depleting substances, free of silicone and free of heavy metals Resistant to industrial oils and harsh chemicals Resistant to most chemicals |
| Recommended Use | For placement in manufacturing plants, production lines, assembly lines, CNC machines, metal working for individual workstations and custom work platforms |
| Special Remarks | Borders are a 100% nitrile rubber compound offering the same resistance to oils/chemicals as the mat – competitor's products use vinyl borders which can degrade. |
| Surface | Large Drainage Holes |
| Edges | Orange and yellow beveled edges |
| Usage Intensity | Heavy duty |
| Material Specifications | Natural rubber |
| Process | Compression Molding |
| Weight Lbs/sqft | 2.9 |
| Fire Rating US | Pass |
| REACH Compliant | Reach compliant (Registration, Evaluation, Authorization and Restriction of Chemicals). |
| Anti-Fatigue Rating | Best |
| Slip Resistance Rating | Best |
| Wear Resistance Rating | Best |

Product Options

| | |
|-------------|--------------|
| Color: | Black/Orange |
| | Black/Yellow |
| Dimensions: | 26in x 40in |
| | 28in x 40in |
| | 38in x 124in |
| | 38in x 40in |
| | 38in x 64in |
| | 40in x 124in |
| | 40in x 64in |