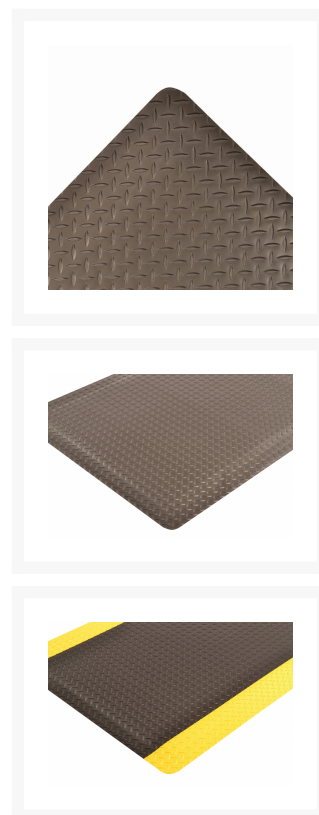
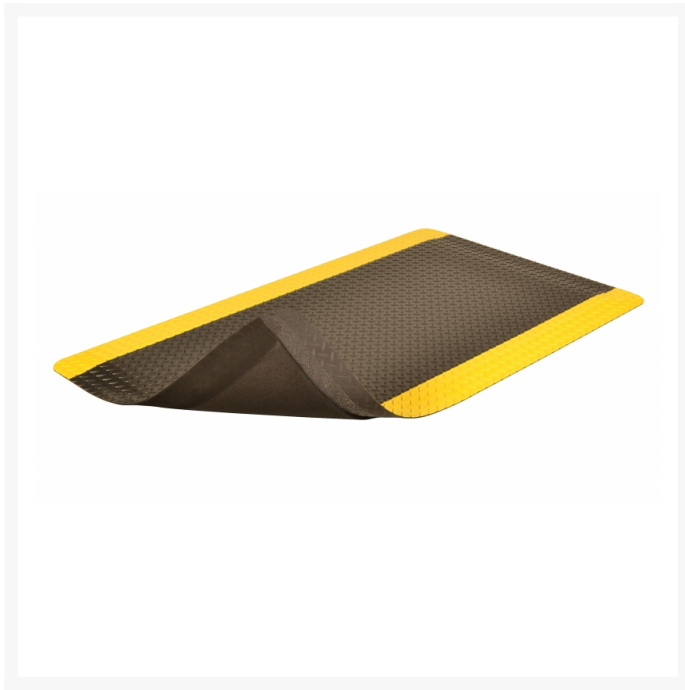




# Anti-Fatigue Mat Ergo Trax® Grande™ 985

## Product Images





## Short Description

---

- Heavy duty vinyl top surface combined with Niru® rubber base provides superior durability and traction
- Niru® rubber foam base provides high friction to reduction in mat movement
- Vinyl top surface is made of 100% recycled materials
- UniFusion™ bond guaranteed for the life of the mat
- Beveled edges on all 4 sides
- Certified by the NFSI (National Floor Safety Institute)

## Description


---

Ergo Trax® Grande™ is a thicker, heavier and stronger anti-fatigue floor mat. Engineered to meet the toughest requirements of today's industrial applications and is particularly suited for multi-shift operations in dry work areas. At a full ONE-INCH thick, it is the ultimate anti-fatigue product maximizing worker productivity and comfort. The durable vinyl diamond-plate top surface design provides non-directional traction and is easy to clean. The top surface is combined with a Niru® rubber sponge base utilizing NoTrax® exclusive UniFusion™ technology that virtually eliminates the possibility of de-lamination. The sloped beveled edges reduce tripping hazards and allow easy access on and off the mat.

## Specifications

Model No	985
Available Colors	Black; Black/Yellow
Overall Thickness	1
Roll Sizes	2'x 75'; 3'x 75'; 4'x 75'
Custom Lengths	2', 3' and 4' widths (up to 75' long)
Standard sizes	2'x 3'; 3'x 5'; 3'x 12'
Group	Ergonomic, Anti-fatigue & Safety Matting
Environment	Dry Areas
Special Characteristics	Coefficient of friction NSF1 certified
Recommended Use	For placement in manufacturing plants, assembly lines, picking, packing and logistics warehouses, individual work stations.
Special Remarks	Vinyl top surface makes it easy to sweep or mop clean. Ideal for multi-shift environments
Surface	Industrial Diamond Plate
Edges	Beveled edges on all sides
Usage Intensity	Heavy duty
Material Specifications	PVC on microcellular vinyl base
Backing	Closed Cell Rubber
Process	Lamination
Weight Lbs/sqft	1.3
Fire Rating US	Pass
Anti-Fatigue Rating	Superior
Slip Resistance Rating	Superior
Wear Resistance Rating	Superior

# Prop 65

 **WARNING:** This product can expose you to chemicals including di-2-ethylhexyl phthalate and/or diisononyl phthalate which is known to the State of California to cause cancer, birth defects or reproductive harm. For more information, visit [www.P65Warnings.ca.gov](http://www.P65Warnings.ca.gov).

## Product Options

Color:	Black
	Black/Yellow
Dimensions:	2ft x 3ft
	2ft x 75ft
	2ft x Specify Length
	3ft x 12ft
	3ft x 5ft
	3ft x 75ft
	3ft x Specify Length
	4ft x 75ft
	4ft x Specify Length